

## Description

Copper RJ45 patch panel series includes a wide range of high performance panels, from 16 to 48 ports. Available in interconnection blocks LSA-Plus/110 IDC, ensuring margin above existing requirements from ISO/IEC IS 11801 (2<sup>nd</sup> edition), CENELEC EN 50173 and TIA/EIA-568-B.2 Enhanced Category 5

## Applications

1000 Base-T Gigabit Ethernet  
 155 Mbps ATM  
 100 Base-TX

Token Ring 4/16 Mbps  
 ISDN Basic and Primary Access  
 TP-PMD

## Standards

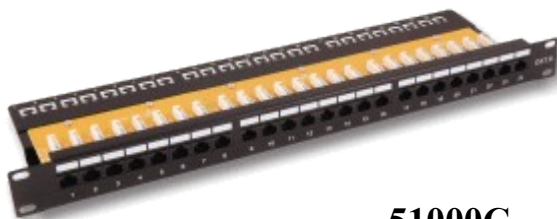
Category 5E according to ISO/IEC 11801, CENELEC EN50173,  
 ANSI/TIA/EIA-568-B.2



**51240A**



**51240B**



**51000C**



**51000D**