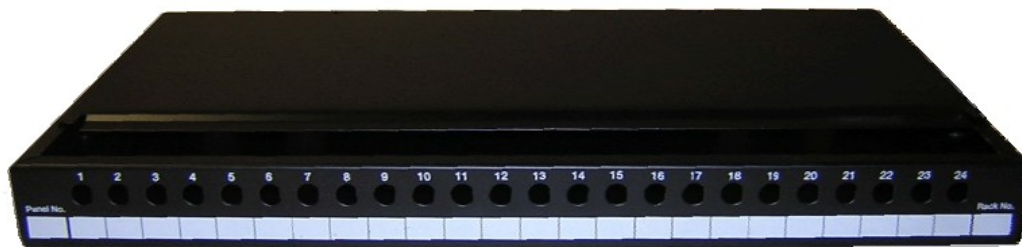


412410	Fixed Patch Panel 24xST / 24xFC/PC
412420	Fixed Patch Panel 24xSC / 24xLC dx
411230	Fixed Patch Panel 12xSC duplex

Description

The Ficocs range of 19" 1HU rack mount patchpanels are available in all standard connector types from the ST to SC simplex and SC duplex style. These panels can be supplied unloaded, part or fully loaded. Preloaded panels can be supplied in either standard configuration of 4, 8, 12, 16, and 24 way or can be custom loaded.

The Ficocs fixed optical fibre patch system in its basic form is supplied with the panels unloaded ready for you to install the adapter of your choice, pre-loaded complete with the required adapter and simple splice management kit, or supplied with preterminated cable to meet your project needs. The Ficocs range of products has grown through the years, for full information on the Ficocs connectors used on the Ficocs patch cords, please contact us at the address below for a connector data sheet.



Dimensions

Width: 19" - 483mm

Depth: 8.5" - 210mm

Height: 1HU - 44mm

24 port ST, SC, FC, MT-RJ, LC, MU, VF45

Specials available to order, contact our sales office for details.

Colour: Black

Cable entry 20mm cable gland

General Properties

1 pc per box

41241S	Sliding Patch Panel 24xST / 24xFC/PC
41242S	Sliding Patch Panel 24xSC / 24xLC dx
41123S	Sliding Patch Panel 12xSC duplex

Description

In data networking the 19" 1HU panel is the mainstay of the distribution chain. The new Ficocs 1HU sliding tray panel is part of a new totally flexible system. The tray is locked in place with two simple to operate plastic catches. When fully extended the tray is designed to lower to 45°, or move the tray to the side and it will lock to lower only 10°. This provides the perfect working platform for simple installation or maintenance.

FICOCS 19" 1HU sliding patch panels have been cost engineered to offer excellent value for money whilst retaining high strength and appearance characteristics. A highly flexible design, these panels are suitable for a range of different applications. Phopshor bronze uniter inserts are suited for both multimode and singlemode applications, with ceramic uniter inserts offering the highest quality connection for singlemode use.

Dimensions

Width: 19" - 483mm

Depth: 8" - 200mm

Height: 1HU - 44mm

24 port ST, SC, FC, MT-RJ, LC, MU, VF45

Specials available to order, contact our sales office for details.

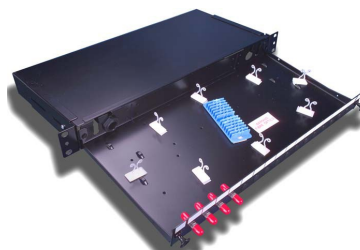
Colour: Black

Cable entry 2 x 20mm cable gland
 4 x 10mm cable gland



Features

- Easy installation
- Easy maintenance
- Flexible design
- Clear labelling
- Write-on labelling area
- Ideal open work area
- Pre formed tie-downs
- Cable openings for all cable options
- Cable entry both sides
- Available in all connector options



DRAWER STYLE, tilt and slide tray lowers to 45° for simple installation or maintenance.

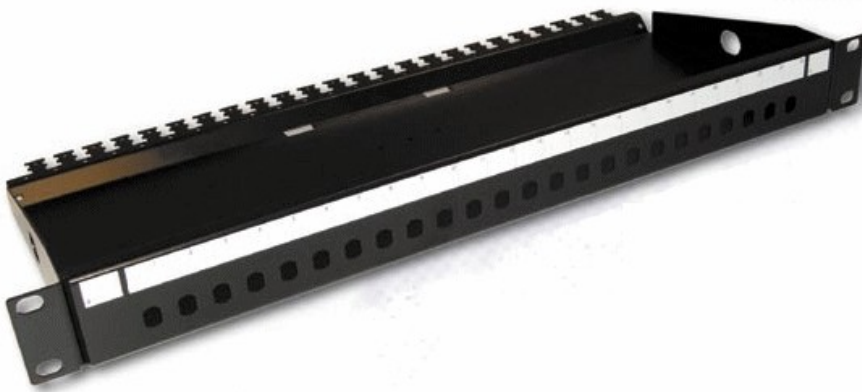
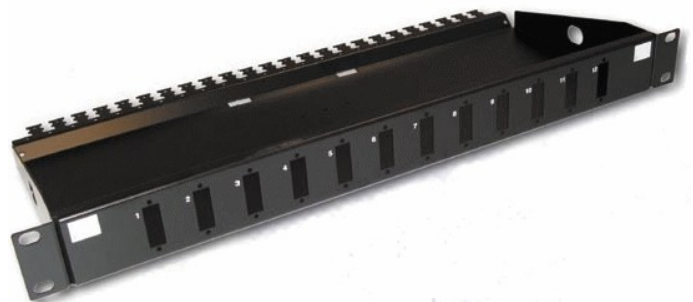
General Properties

1 pc per box

41241C	Fixed Patch Panel 24xST / 24xFC/PC
41242C	Fixed Patch Panel 24xSC / 24xLC dx
41123C	Fixed Patch Panel 12xSC duplex
41COVR	PVC cover

Description

Ficocs fixed patch panel system in its basic form is supplied with the panels unloaded ready for you to install the adapter of your choice. The panel can also be pre-loaded complete with the required adapter and simple splice management kit, or pre-loaded with pigtailed to meet your project needs.



These panels have been designed to minimise the cost of fibre optic installations. This is a very cost effective panel, which is available in three styles:

- 24 SC simplex ports (24 LC duplex, 24 MTRJ and 24 E2000)
- 24 ST ports (24 FC)
- 12 SC duplex ports (12 LC quad)

The panel can be used on its on, with a metal or transparent plastic lid. The metal lid gives rugged protection of the optical panel if it is to be positioned in an area where debris may fall on the optical panel. The plastic lid is the ideal solution for communication room environment where dust protection is all that is required of the lid. For project managers they are able to check the quality of an installation and gives project managers the piece of mind that the link has been installed and managed correctly. The plastic lid has the added advantage of being able to fault find within the panel without physically disturbing the panel in the rack.



Dimensions

Width: 19" - 483mm

Depth: 8" - 200mm

Height: 1HU - 44mm

24 port ST, SC, SC duplex, FC, MT-RJ, LC duplex, LC quad

Specials available to order, contact our sales office for details.

Colour: Black

General Properties

1 pc per box